

# Temperature relay



## Outline and feature of the product

This product can be widely used as a measuring instrument for management and control of bearing temperature of turbine. The setting temperature can be easily set by the temperature adjusting dial outside the measuring instrument.

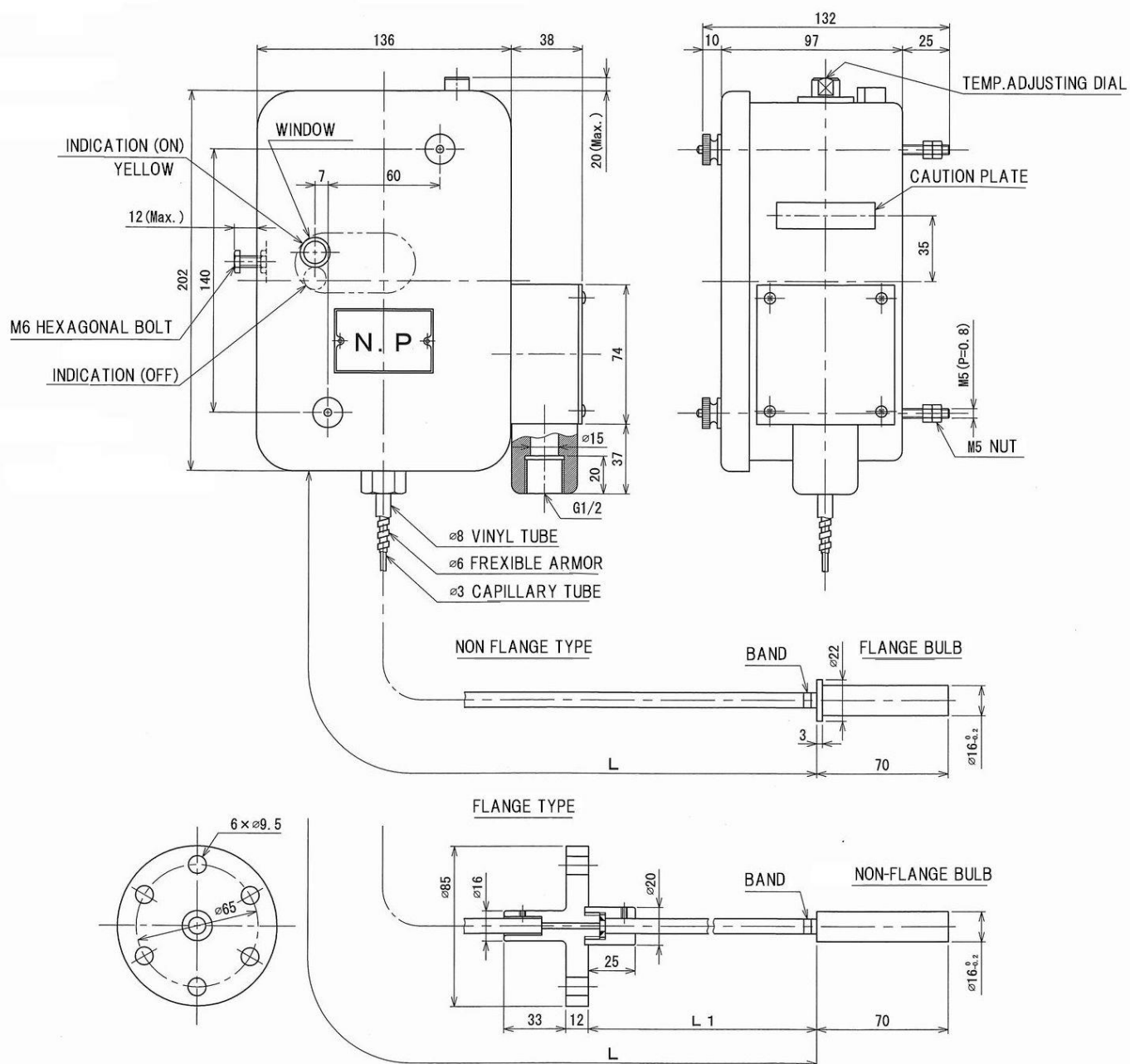
【 Type : TR-83, TS-2, etc.】

## ◆ Main Specifications :

Type	TR-83	TS-2
Element	Bellows	Bellows
Switch Setting	Outside adjusting (with indicator)	Fixed one contact
Setting Temperature range	60~90℃	50~100℃
Reset style	Manual	Manual
Switch	Micro switch	Micro switch
Accuracy	less than $\pm 3^{\circ}\text{C}$	less than $\pm 3^{\circ}\text{C}$
Contact capacity (resistance load) ※	for general : AC480V 10A DC125V 0.5A for DC : DC125V 10A 250V 3A	AC480V 15A DC125V 0.5A
Withstand voltage	AC2000V for 1min.	AC2000V for 1min.
Insulation resistance	DC 500V Megger, 100M $\Omega$ above	DC 500V Megger, 100M $\Omega$ above
Conduit outlets	G1/2	
Terminal screw size	M5 (P=0.8)	M5 (P=0.8)
Ambient temperature	-20~+50℃	-20~+50℃
Weight	Approx.4kg	Approx.2kg

※These products can also be manufactured by inductive load.

◆ Fig. : Type TR-83



**For further information:**

Shinagawa Sokki Mfg. Co., Ltd.  
 2-16, Omori-minami 1-chome, Ota-ku, Tokyo 143-0013  
 Phone : +81-3-3745-0011 FAX: +81-3-3745-0015  
 URL : <http://www.shinagawasokki.co.jp>